

# Threat Exposure Management

## All-in-One, Fully Integrated Platform

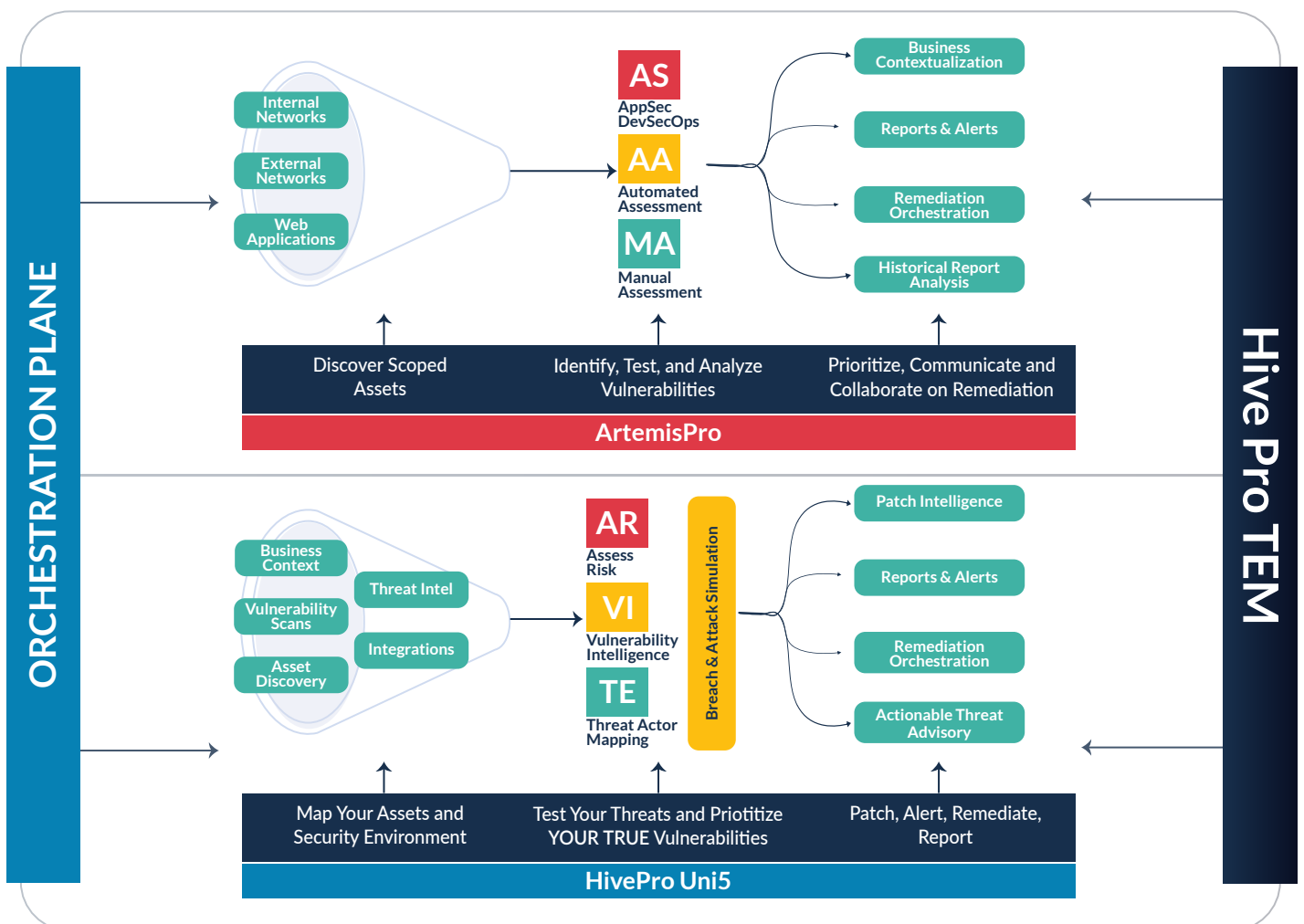
Hive Pro's Threat Exposure Management (TEM) is an all-in-one, fully integrated platform that aims to reduce an organization's vulnerabilities and minimize exposure to threats. The platform, comprising of ArtemisPro and HivePro Uni5, fosters cooperation and collaboration among stakeholders, streamlining vulnerability management and strengthening security posture.

### ArtemisPro: TEM Workflow Orchestration

ArtemisPro serves as the workflow orchestration layer of Hive Pro, compiling and assessing vulnerability data from a range of security assessments. It enables streamlined workflow management, improving cross-functional team collaboration, and providing rich data analysis. By sharing intelligence with HivePro Uni5, ArtemisPro helps organizations prioritize remediation efforts, secure assets, and optimize security controls.

### HivePro Uni5: Vulnerability & Threat Exposure Remediation

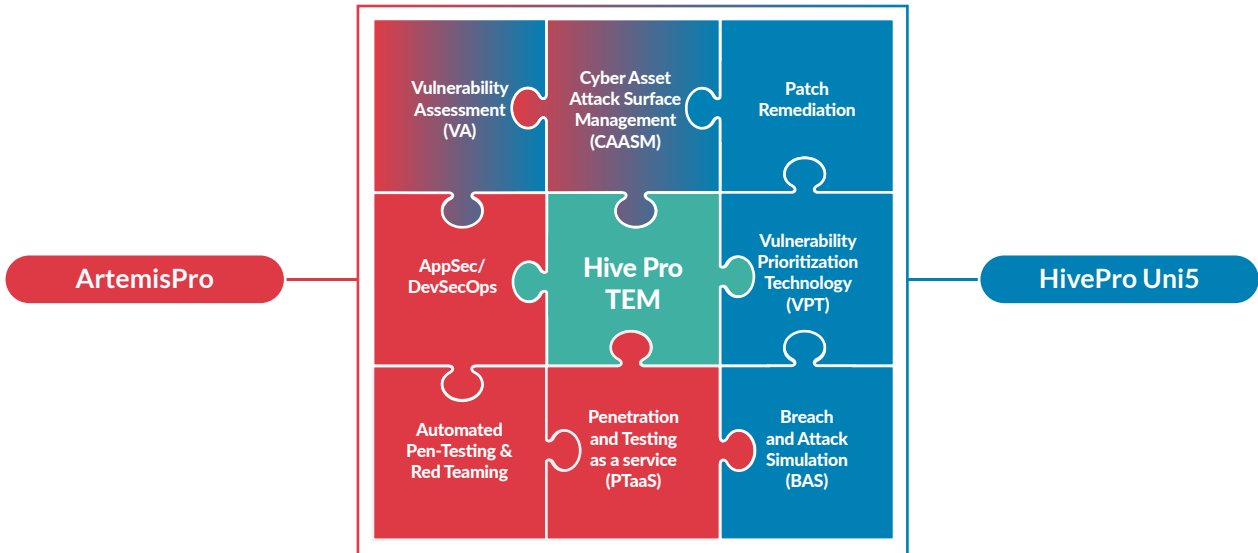
HivePro Uni5 contextualizes assets against vulnerability and threat intelligence to prioritize vulnerabilities and provide actionable remediation solutions. HivePro Uni5's Breach & Attack Simulation tool, Rookie, simulates real-world attacks to test security control efficacy and generate diverse remediation options. Integrating with Asset Management and ITSM platforms, HivePro Uni5 streamlines remediation orchestration, tracks workflows, and provides strategic, tactical, and operational reports for stakeholders.



# Working Together

Hive Pro bridges the gap between point-solutions, providing a unified platform for security teams of all maturity levels. Experience consistent, actionable, and understandable security posture improvements with our fully-integrated TEM solution.

## Hive Pro TEM: All-In-One Platform



## Key Benefits



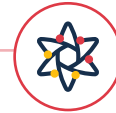
### Rich Intelligence & Timely Remediation

The platform maps assets, vulnerabilities, and threats in an easy-to-read interface, enabling focused and timely remediation efforts.



### Security Optimization

The Hive Pro TEM platform offers a comprehensive, intuitive solution to identify and resolve threats and vulnerabilities that matter to your business.



### Strong Cross-Function Collaboration

Hive Pro: TEM promotes transparent information sharing and collaboration through integrated workflows, processes, and decisions.



### Rational, Timely, In Sync Workflows

Security Operations teams can track workflows to ensure optimal frequency and alignment with remediation cycles, risk tolerance, compliance mandates, and business-critical events.



### Tailor-Made For All Organizations

Hive Pro TEM prioritizes vulnerabilities based on business-critical assets, streamlines assessment workflows, and aligns risk decisions with relevant stakeholders for faster collaboration and resolution.